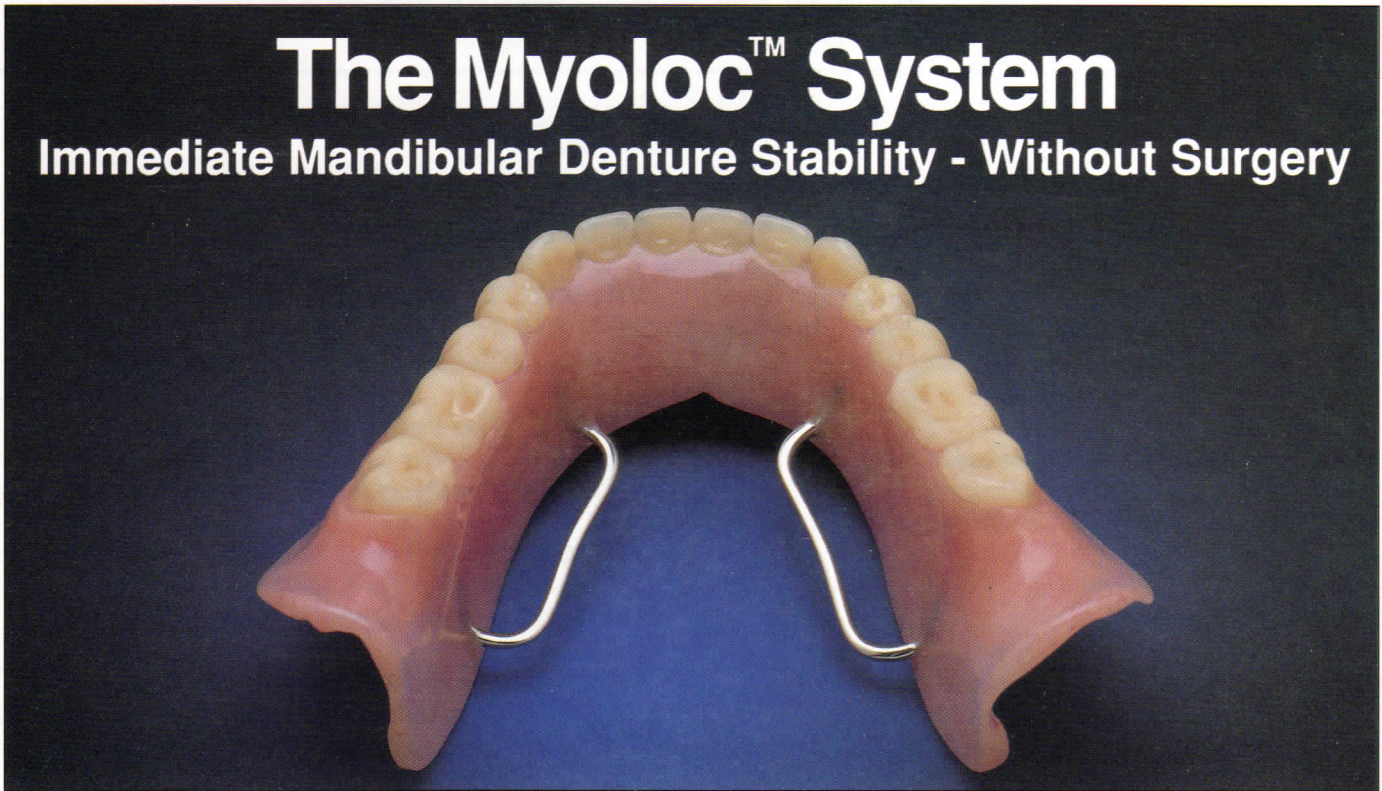


# The Myoloc™ System

## Immediate Mandibular Denture Stability - Without Surgery



Many dental patients suffer with dentures that slip, slide or shift. Unstable dentures make speech difficult and proper mastication of food almost impossible.

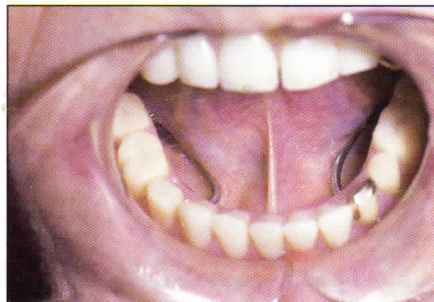
It doesn't have to be this way! Now, Winder Research offers a proven, cost-effective solution. The result of over five years of development, the Myoloc System is the truly affordable route to stable dentures for virtually every edentulous patient.

### Simple, Non-Surgical Procedure

Alternative treatment methods like biomechanical implants can be complex and expensive. The patented\* Myoloc System utilizes the patient's existing prosthesis and the "neutral zone" between the floor of the mouth and the ventral surface of the tongue to stabilize full mandibular dentures. No threatening surgery, time-consuming impressions or expensive prosthodontic reconstruction. And, the system is completely reversible.



Denture on model with stabilizing "Wings" in position.



Modified seated denture with tongue retracted illustrates intraoral "Wing" position.

### Easy to Implement

Two adjustable "Wings™" are placed so they extend bilaterally from the lingual surface of a new or existing denture. The tongue then rests on these extensions, allowing it to counterbalance the muscular forces that would normally dislodge the prosthesis.

### Proven Over Three Years of In-vivo Research

Based on a three year study, only the Myoloc System offers your edentulous patients an easy, inexpensive way to:

- an IMMEDIATE improvement in denture retention, stability, speech and mastication
- elimination of "clicking" sounds
- decreased food entrapment
- a completely invisible, non-interfering and non-irritating technique, without soft tissue impingement

### Designed for Optimal Flexibility and Patient Comfort

Available in three convenient sizes, the Wings are anatomically formed for better adaptability to the tongue and improved patient comfort. Manufactured of high quality, corrosion-resisting stainless steel, each Wing has been individually heat treated, ensuring the consistent malleability necessary for even the most exacting adjustments. In combination with the sleeve component, Myoloc is the well thought out, completely adjustable way to denture stability you and your patients have been searching for.



With tongue at rest, "Wings" are not visible. Denture is now stabilized.

### The Myoloc System Denture Stability Made Easy

# Pfingst

AND  
CO., INC.  
SINCE  
1969

105 Snyder Rd. • So. Plainfield, NJ 07080  
(908) 561-6400 • Fax No. (908) 561-3213



# The Myoloc™ System

---

## Form of Supply

### **WR100**    **Introductory Kit (Clinical and Lab)**

Contents: 6 Wings (2 each Large, Medium and Small), 6 Sleeves, Adhesive Wax, Paper Myoloc Gauge, 6 Positioning Wings Instructions

### **WR100-C**    **Introductory Kit (Clinical Only)**

Contents: Adhesive Wax, 24 Positioning Wings, Instructions

### **WR200**    **Clinical Kit**

Contents: 12 Wings (4 each Large, Medium and Small), 12 Sleeves, Stainless Steel Myoloc Gauge, Adhesive Wax, Demonstration Model, 24 Positioning Wings, Instructions

### **WR300**    **Lab Kit**

Contents: Myoloc Marker, Stainless Steel Myoloc Gauge, 24 Wings (8 each Large, Medium and Small) 24 Sleeves, 6 Positioning Wings, Instructions

### **Refill Packages:**

**WR110-2** Two Wings & Sleeves (Small)

**WR110-10** Ten Wings & Sleeves (Small)

**WR110-20** Twenty Wings & Sleeves (Small)

**WR120-2** Two Wings & Sleeves (Medium)

**WR120-10** Ten Wings & Sleeves (Medium)

**WR120-20** Twenty Wings & Sleeves (Medium)

**WR130-2** Two Wings & Sleeves (Large)

**WR130-10** Ten Wings & Sleeves (Large)

**WR130-20** Twenty Wings & Sleeves (Large)

**WR160** Myoloc Marker

**WR170** Disposable Positioning Wings (pkg. of 24)

**WR180** Stainless Steel Myoloc Gauge Only

**WR190** Demonstration Model Only

**WR195** Instructional Video (Clinical & Lab)

---

AVAILABLE THROUGH:

**Pfingst**  
AND  
CO., INC.  
SINCE  
1905